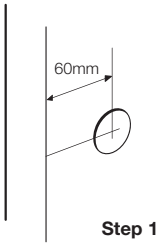
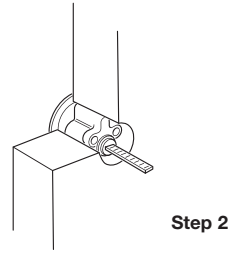


FITTING INSTRUCTIONS P-77-BLX-PB-60



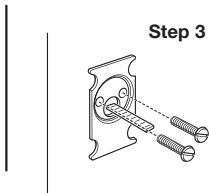
1. At the height you want your lock, use a pencil to mark a spot exactly 60mm (2 $\frac{3}{8}$ ") from the edge of the door. At that spot, drill a 32mm (1 $\frac{1}{4}$ ") diameter hole through the door.
2. With the key removed, insert the cylinder through the brass ring and place it in the hole.



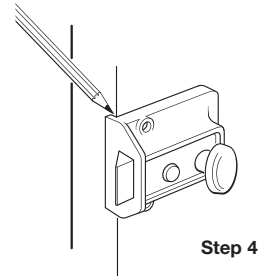
3. From the back of the door, secure the back plate to the cylinder with the two flat-ended connecting screws supplied, so that it fits flush with the door surface. For doors less than 45mm (1 $\frac{3}{4}$ ") thick, you will need to shorten the connecting screws to make sure they fit tight on to the back plate.



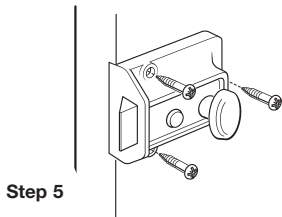
4. Place the lock body on the back of the door, making sure that the flat connecting bar of the cylinder is inserted into the slot on the back of the lock body. Mark the outline of the lip of the lock case on the edge of the door and chisel a recess to hold it.



5. Place the lock body on the back of the door in its final position and using a pencil, mark the position of the 3 fixing screws. Then using a 3mm (1/8") drill bit, drill a 'pilot' hole to a depth of 20mm (3/4") at each of the three marks. Screw the lock body to the door at those three points using the fixing screws provided.



6. Gently close the door and using the fitted lock as a guide, mark the position of the remaining component – the 'staple' on the door frame. Chisel out a recess in the door frame to hold the staple flush with the door frame and fix it with the screws provided.



The fitting of your new Yale lock is now complete and guaranteed for 10 years.

